



# SWING GATE OPENERS

# Mastiff

## 400 & 400L



Reliable and Durable Automation System  
for Gates Weighing up to 350~500 Kg or  
2.5m~5m in length. 24Vdc  
Low Voltage Heavy Duty  
Electromechanical gear motor  
provides safety installation and  
powerful operation. Taiwan  
Based Product with one year  
warranty and after sales  
services.



Plot # 89-A, I&T Center, G-8/1, Islamabad



Info@teknomation.com.pk



<http://www.teknomation.com.pk/>

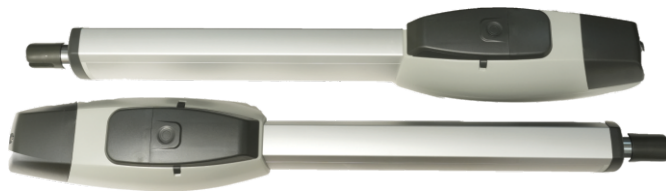


+92 324 5508958

## Salient Features

- Wifi Module Based Control Card that can be controlled via Mobile Phone App.
- Die-cast aluminum motor cover provide great resistance to harsh environmental conditions.
- Worm gear design ensures smooth and silent operation.
- Obstacle detection and crush prevention.
- Pedestrian mode for foot traffic.
- Manufactured In accordance with EN61000-6-1:2007

### Kit Includes



2x **Actuator** Arms



1x **Control Panel**  
with WIFI Module



2x **Remotes**



1x **Additional Latch Lock**  
for increased Security



2x **Manual Release Keys**



1x **Floor Stopper**



**1 Year Warranty**  
(Extendable)

Technical Features	Mastiff 400	Mastiff 400L
Power supply	230Vac (50~60Hz)	230Vac (50~60Hz)
Motor Power supply	24Vdc	24Vdc
Max. gate weight	350kg	450kg
Max. gate Length	2.5m	4m
Peak Thrust	3500N	3500N
Operation Stroke	350mm	540mm
Piston extension / retraction speed	25.5±2mm/sec	25.5±2mm/sec
Typical gate opening time	<14 sec	<14 sec
Duty cycle	20%	20%
Protection grade(IP)	IP44	IP44
Working Temperature	20°C to 50°	20°C to 50°